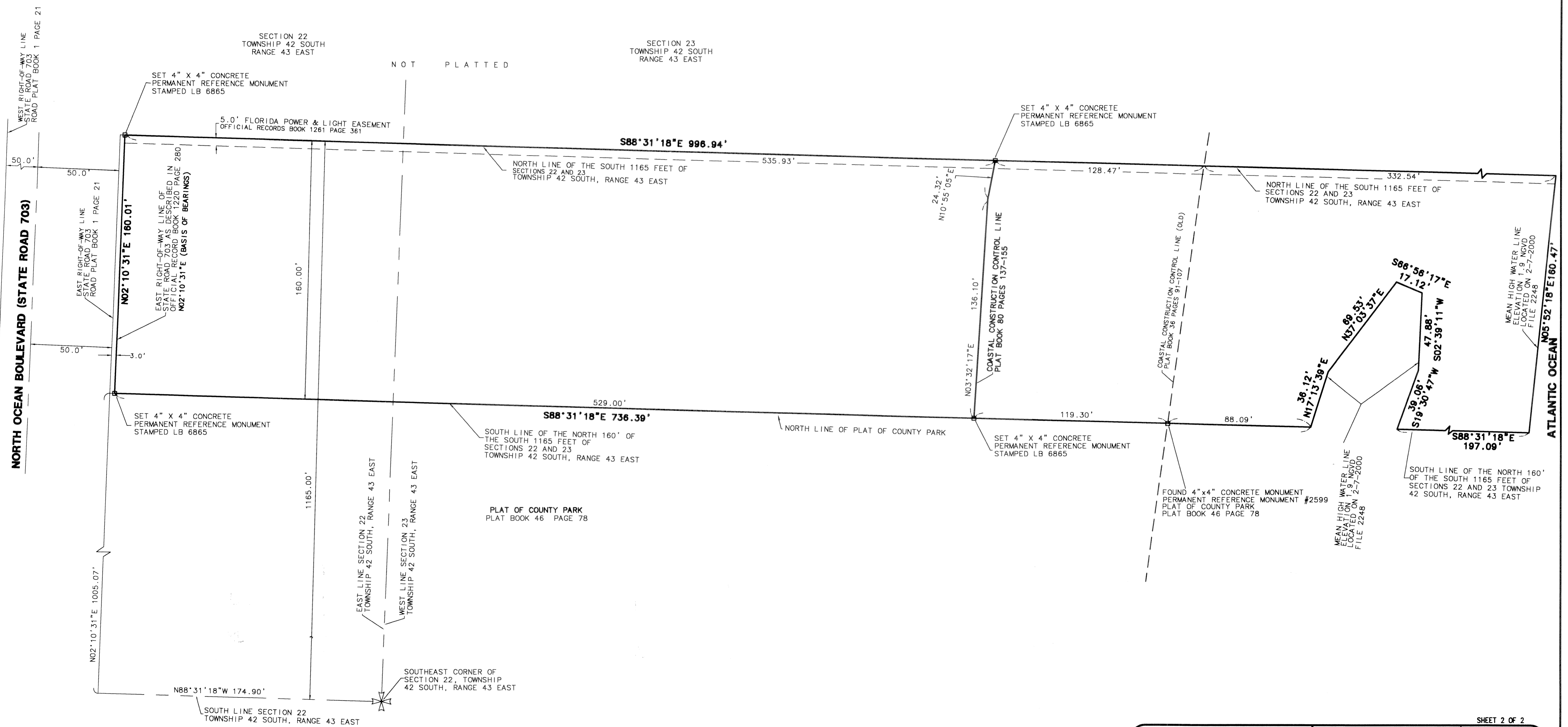
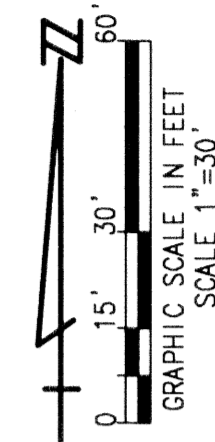


# OASIS SINGER ISLAND

LYING IN SECTIONS 22 AND 23, TOWNSHIP 42 SOUTH, RANGE 43 EAST  
CITY OF RIVIERA BEACH, PALM BEACH COUNTY, FLORIDA

JANUARY 2004 SHEET 2 OF 2

167



<b>TIMOTHY M. SMITH</b> <b>LAND SURVEYING, INC.</b> 103 SUNFLOWER STREET ROYAL PALM BEACH, FL 33411 (561) 792-9157 LB #6865		<b>OASIS SINGER ISLAND</b>	
		SCALE: 1"=30'	
		DATE: JAN 2004	
		DIRECTORY: DUBISING	
		FIELD BOOK: N/A	
DWG NO.: SINGRP01			

SHEET 2 OF 2